



Washington Club Hall





PAUL A SMITH III

General Manager

gm@washingtonclub.net

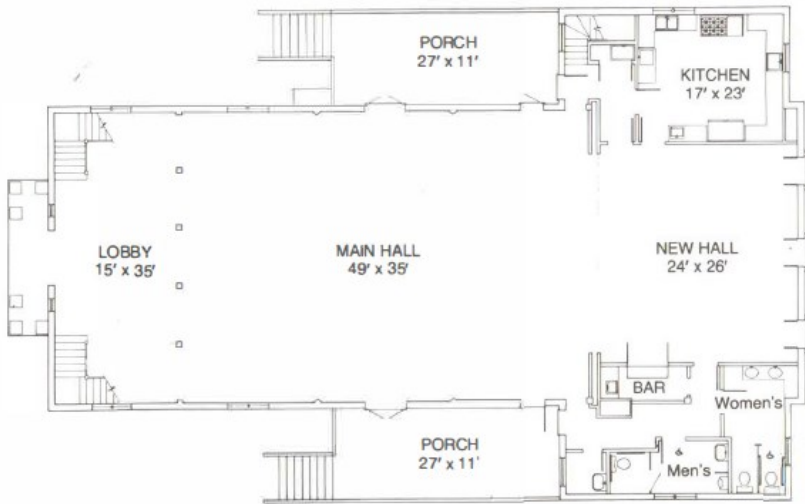
(866) 868-0376 ext.1



WEDDINGS AND EVENTS

Thank you for your interest in Washington Club Hall as the location for your special event. Our charming Hall, designed by renowned local architect Erich Rossiter, has been a fixture on the Washington Green for more than 100 years.





CAPACITY- 150 Maximum Capacity

Facilities

Club Hall's exceptional location in the hills of Litchfield County provides a picturesque backdrop for celebrating life's finest moments. Club Hall is available for rent for your event. It can accommodate up to 150 for a sit down dinner. The Washington Club does not have a food and beverage department, so you'd have to provide your own caterer.

Amenities

Tables	Chairs	Flatware
Sound System	Glassware	China
Limited Complimentary Parking	Kitchen for Caterer	Handicap Accessible
	Bridal Area	

WASHINGTON CLUB
HALL



Pricing

CLUB HALL

	WC MEMBER & WASHINGTON NON-PROFIT	NON-MEMBER USAGE
FRIDAY – SUNDAY		
Use of Entire Hall <i>Maximum 150</i>	\$2000	\$4000
MONDAY – THURSDAY		
Use of Entire Hall <i>Maximum 150</i>	\$500	\$1500
Use of Small Area <i>Maximum 48</i>	\$200	\$500

Pricing above includes event day plus 1 day for either setup or teardown. \$500 for an additional day.

GOLF CLUBHOUSE

FRIDAY – SUNDAY \$600 \$900

*There will be a security deposit of \$500.00 applicable to rentals.
The security deposit will be refunded after deducting expenses
for clean-up and damages.*

***A 25% deposit is due on the signing of the contract to secure the
date(s) and is nonrefundable.***

*Rentals are from 8:00 AM on the day of the rental until 11:00AM the
following day unless indicated on your agreement.*

*All holidays are the same rate as Friday-Sunday rates
and based upon availability*

*Non-Profit organizations that are either located in Washington or include
Washington in their primary service area.



THE WASHINGTON CLUB HALL
92 Green Hill Road
Washington, CT 06793
www.washingtonclub.net